

NOTICE TO MARINERS

18.05.2018

DUDGEON OFFSHORE WIND FARM

Update of Failure of Navigation Lights, Foghorn and Aviation / SAR lights

NOTICE IS HEREBY GIVEN that we have had a failure of Navigation, lights, foghorn sound signal and aviation / SAR lights on the below turbines or WTG's.

WTG E4 Position	53° 17,843'N	1° 21,107'E
WTG E5 Position	53° 18,575'N	1°21,147'E
WTG E6 Position	53° 18,832'N	1°20,592'E

All vessels in the Dudgeon Wind farm location are advised to give a wide berth to the wind farm and proceed with caution.

We will try to reinstall over the coming 21 days.

The Dudgeon wind farm is now in the operational phase and there will be various vessels within the wind farm including the SOV Njord and Dalby Wharfe CTV.

Service Operation Vessel

The ESVAGT NJORD is performing support for the operation of the wind farm and will be in regular transit between the Dudgeon site and Great Yarmouth.

Crew transfer vessels

The CTV DALBY WHARFE is performing support for the operation of the wind farm and will be in regular transit between the Dudgeon site and Great Yarmouth.

Wind Turbine Generator Installation

Completed.

WTG	Easting	Northing	Lon DD MM, m	Lat DD MM,m	Depth LAT	WTG	Easting	Northing	Lon DD MM,m	Lat DD MM,m	Depth LAT
DAE A1	390483	5900665	1° 21,527' E	53° 14,637' N	-19.5	DKC F6	390834	5907486	1° 21,702' E	53° 18,318' N	-22.3
DAD A2	389845	5901183	1° 20,942' E	53° 14,908' N	-19.6	DKH G1	393859	5905036	1° 24,473' E	53° 17,034' N	-23.6
DAC A3	389206	5901700	1° 20,357' E	53° 15,179' N	-19.0	DKJ G2	394465	5904546	1° 25,028' E	53° 16,778' N	-23.6
DAB A4	388568	5902218	1° 19,773' E	53° 15,450' N	-19.2	DKK G3	395070	5904056	1° 25,582' E	53° 16,521' N	-24.3
DAA A5	387929	5902735	1° 19,188' E	53° 15,721' N	-18.8	DKL G4	395675	5903566	1° 26,136' E	53° 16,264' N	-25.1
DDE B1	391313	5902840	1° 22,228' E	53° 15,820' N	-21.5	DKM G5	396281	5903077	1° 26,691' E	53° 16,007' N	-26.4
DCD B2	390441	5902117	1° 21,459' E	53° 15,419' N	-19.9	DJM G6	396225	5902259	1° 26,656' E	53° 15,565' N	-25.6
DCC B3	389708	5902711	1° 20,788' E	53° 15,730' N	-20.5	DHG H1	393086	5904243	1° 23,794' E	53° 16,598' N	-21.4
DCB B4	388975	5903306	1° 20,116' E	53° 16,042' N	-19.3	DHH H2	393820	5903649	1° 24,466' E	53° 16,286' N	-23.5
DCA B5	388041	5904311	1° 19,255' E	53° 16,572' N	-18.2	DHJ H3	394553	5903055	1° 25,137' E	53° 15,975' N	-23.9
DBA B6	387985	5903523	1° 19,221' E	53° 16,146' N	-18.2	DKH H4	395287	5902461	1° 25,809' E	53° 15,663' N	-24.4
DDD C1	390580	5903434	1° 21,557' E	53° 16,131' N	-20.1	DFK H5	395204	5901199	1° 25,759' E	53° 14,982' N	-22.5
DDC C2	389848	5904027	1° 20,886' E	53° 16,441' N	-19.8	DHM H6	396170	5901440	1° 26,623' E	53° 15,123' N	-24.5
DDB C3	389117	5904621	1° 20,216' E	53° 16,753' N	-19.4	DDG J1	392777	5901653	1° 23,568' E	53° 15,198' N	-23.1
DDA C4	388097	5905099	1° 19,289' E	53° 16,997' N	-19.4	DDH J2	393509	5901060	1° 24,238' E	53° 14,887' N	-22.5
DEA C5	388153	5905887	1° 19,322' E	53° 17,423' N	-19.4	DCJ J3	394107	5899145	1° 24,814' E	53° 13,861' N	-21.7
DFA C6	388209	5906675	1° 19,356' E	53° 17,848' N	-20.0	DAL J4	394315	5897562	1° 25,032' E	53° 13,010' N	-22.3

DFD D1	390741	5904726	1° 21,675' E	53° 16,829' N	-21.7	DAM J5	394954	5897045	1° 25,617' E	53° 12,739' N	-21.2
DFC D2	390006	5905323	1° 21,001' E	53° 17,142' N	-20.9	DDF K1	392045	5902246	1° 22,898' E	53° 15,508' N	-21.5
DFB D3	389271	5905920	1° 20,328' E	53° 17,455' N	-20.1	DCF K2	391907	5900928	1° 22,801' E	53° 14,796' N	-21.2
DHB D4	389420	5907213	1° 20,435' E	53° 18,154' N	-20.2	DCG K3	392640	5900334	1° 23,472' E	53° 14,485' N	-20.8
DHA D5	388971	5907930	1° 20,015' E	53° 18,535' N	-20.3	DCH K4	393373	5899739	1° 24,143' E	53° 14,173' N	-21.0
DGA D6	388265	5907463	1° 19,390' E	53° 18,274' N	-20.3	DAK K5	393676	5898079	1° 24,448' E	53° 13,282' N	-21.8
DFE E1	391477	5904129	1° 22,349' E	53° 16,517' N	-22.2	DCE L1	391174	5901522	1° 22,130' E	53° 15,107' N	-21.0
DHE E2	391619	5905431	1° 22,450' E	53° 17,220' N	-22.4	DAF L2	391122	5900148	1° 22,112' E	53° 14,366' N	-19.9
DHD E3	390886	5906025	1° 21,779' E	53° 17,531' N	-20.7	DAG L3	391760	5899631	1° 22,695' E	53° 14,095' N	-20.2
DHC E4	390153	5906619	1° 21,107' E	53° 17,843' N	-20.6	DAH L4	392399	5899114	1° 23,280' E	53° 13,824' N	-21.0
DKB E5	390229	5907976	1° 21,147' E	53° 18,575' N	-21.5	DAJ L5	393038	5898596	1° 23,865' E	53° 13,553' N	-20.6
DKA E6	389624	5908466	1° 20,592' E	53° 18,832' N	-21.1	DFE T1	392212	5903533	1° 23,022' E	53° 16,204' N	-21.5
DHF F1	392353	5904837	1° 23,123' E	53° 16,909' N	-21.7	DFG T2	392948	5902936	1° 23,696' E	53° 15,891' N	-22.1
DKG F2	393254	5905526	1° 23,919' E	53° 17,291' N	-23.2	DDJ T3	394241	5900466	1° 24,908' E	53° 14,575' N	-21.8
DKF F3	392649	5906016	1° 23,365' E	53° 17,548' N	-22.8	DDK T4	394974	5899873	1° 25,579' E	53° 14,264' N	-22.3
DKE F4	392044	5906506	1° 22,811' E	53° 17,805' N	-22.4	DCK T5	394840	5898551	1° 25,484' E	53° 13,550' N	-21.2
DKD F5	391439	5906996	1° 22,256' E	53° 18,062' N	-22.0	DOW OSS	391869	5902954	1° 22,726' E	53° 15,888' N	-21.1

Crew transfers vessels

CTV's are operating 24hr per day onsite subject to weather.



GENERAL

ALL VESSELS ARE REQUESTED to give all support vessels a wide berth.

MARINERS ARE ADVISED to navigate with caution and keep continued watch on VHF Ch. 16 when navigating the area.

Please direct any enquiries regarding this notice to Statoil Wind Control Centre: statoilwindcontrol@statoil.com

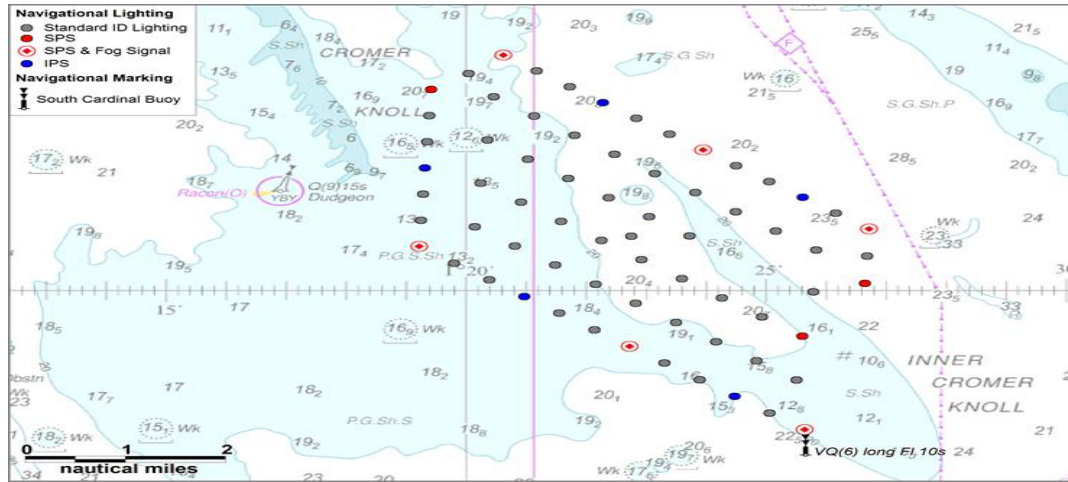
A copy of this notice can also be found at:

<http://dudgeonoffshorewind.co.uk/news/notice-to-mariners>

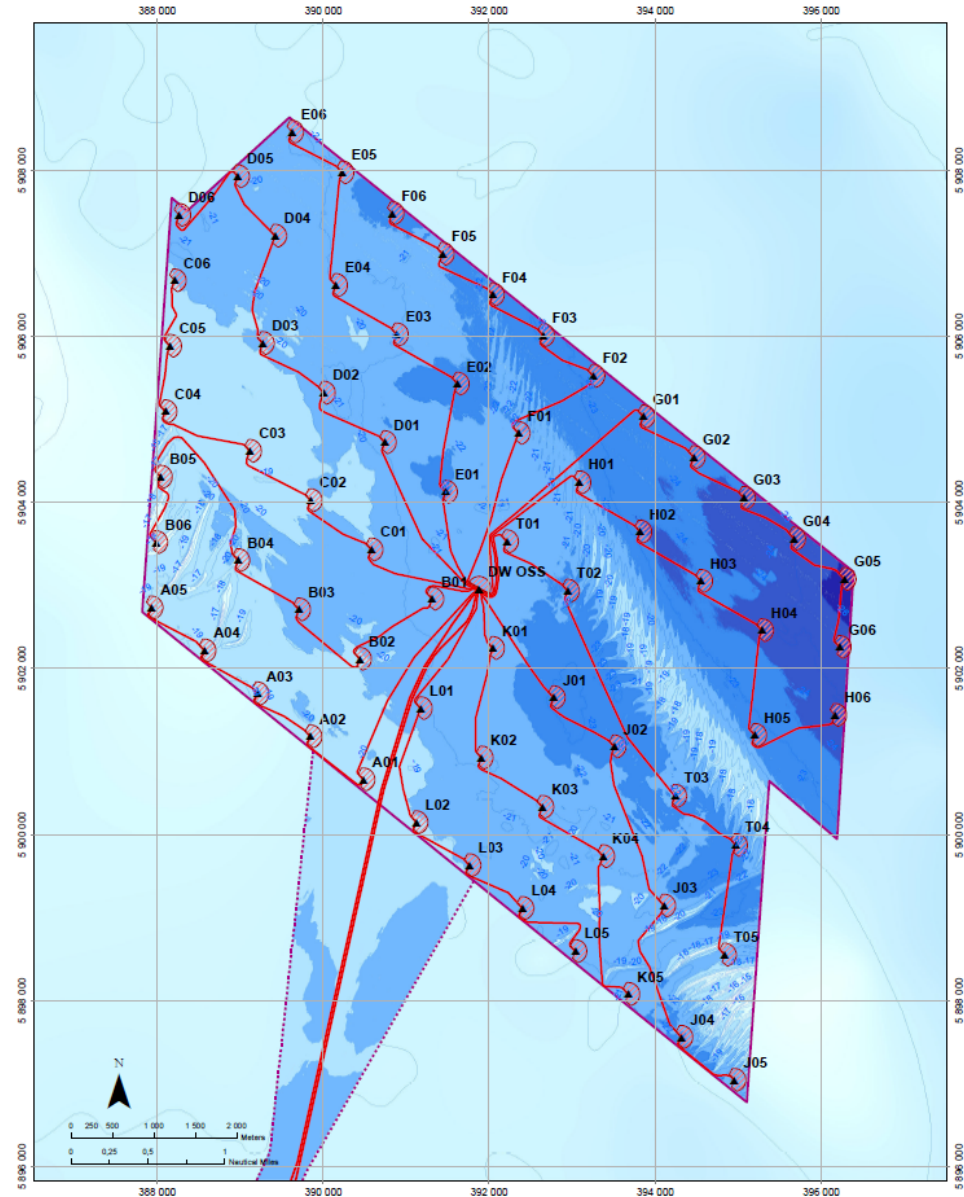
SITE DETAILS

Position of Navigation Buoys

Mark	Location	Name	Latitude	Longitude	Status	Flash Character	Code	Range
South Cardinal	SE Cardinal	S - DUDGEON	53° 12,470' N	1° 25,617' E	Permanent	VQ(6) long Fl.10s	516	5nm



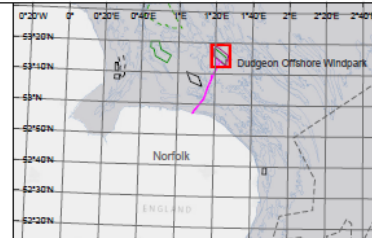
WTG ID and locations (coordinates)



WTG and Substation Locations											
WTG	Easting	Northing	Lon DD	Lat DD	Depth LAT	WTG	Easting	Northing	Lon DD	Depth LAT	
A01	390483.0	5900665.0	1,368777	53,243947	-19.5	F06	390834.0	5907486.0	1,361693	53,305308	-22.3
A02	389646.0	5901183.0	1,349042	53,249409	-19.6	G01	393859.0	5905036.0	1,407980	53,283808	-23.0
A03	389206.0	5901700.0	1,338289	53,252992	-19.0	G02	384485.0	5904546.0	1,417139	53,279638	-23.6
A04	388568.0	5902218.0	1,326549	53,257502	-19.2	G03	395070.0	5904056.0	1,426371	53,276343	-24.3
A05	387929.0	5902735.0	1,319792	53,262013	-18.8	G04	395675.0	5903566.0	1,435601	53,271060	-25.1
B01	391313.0	5902840.0	1,370468	53,283661	-21.5	G05	396281.0	5903077.0	1,444844	53,266785	-26.4
B02	390441.0	5902117.0	1,357649	53,266965	-19.9	G06	396225.0	5902259.0	1,444272	53,259423	-25.6
B03	389708.0	5902711.0	1,348460	53,262170	-20.5	H01	393086.0	5904243.0	1,396567	53,279627	-21.4
B04	388975.0	5903306.0	1,335268	53,267364	-19.3	H02	393820.0	5903649.0	1,407769	53,271438	-23.5
B05	388041.0	5904311.0	1,320916	53,276197	-18.2	H03	394553.0	5903055.0	1,418953	53,266246	-23.9
B06	387985.0	5903523.0	1,320354	53,269105	-18.2	H04	395287.0	5902461.0	1,430149	53,261054	-24.4
C01	390580.0	5903434.0	1,356278	53,269847	-20.1	H05	395254.0	5901199.0	1,428321	53,249698	-22.5
C02	389848.0	5904027.0	1,349102	53,274024	-19.8	H06	395170.0	5901440.0	1,443715	53,252053	-24.5
C03	389117.0	5904621.0	1,338937	53,279209	-19.4	T01	392212.0	5903533.0	1,383706	53,270071	-21.5
C04	388097.0	5905099.0	1,321478	53,283289	-19.4	T02	392948.0	5902939.0	1,394938	53,264856	-21.1
C05	388153.0	5905887.0	1,322040	53,290382	-19.4	T03	394241.0	5900486.0	1,415137	53,242920	-21.8
C06	388206.0	5906675.0	1,322902	53,297474	-20.0	T04	394974.0	5909873.0	1,428312	53,237737	-22.3
D01	390741.0	5904726.0	1,361247	53,280489	-21.7	T05	394840.0	5908551.0	1,424742	53,225832	-23.2
D02	390006.0	5905323.0	1,350022	53,285702	-20.9	J01	392777.0	5901653.0	1,392808	53,253293	-21.1
D03	389271.0	5905920.0	1,338793	53,290913	-20.1	J02	393509.0	5901060.0	1,403974	53,248112	-22.5
D04	389420.0	5907213.0	1,340577	53,302562	-20.2	J03	394107.0	5909145.0	1,413569	53,231024	-21.7
D05	388974.0	5907930.0	1,333591	53,308910	-20.3	J04	394315.0	5907582.0	1,417208	53,216941	-22.3
D06	388265.0	5907493.0	1,323185	53,304566	-20.3	J05	394954.0	5907045.0	1,426945	53,212322	-21.2
E01	391477.0	5904129.0	1,372488	53,275276	-22.2	K01	392045.0	5902248.0	1,381839	53,258473	-21.5
E02	391819.0	5905431.0	1,374170	53,287004	-22.4	K02	391907.0	5900928.0	1,380019	53,248602	-21.2
E03	390886.0	5906025.0	1,362975	53,292191	-20.7	K03	392640.0	5900334.0	1,391200	53,241413	-20.8
E04	390153.0	5906619.0	1,351778	53,297377	-20.6	K04	393373.0	5909739.0	1,402378	53,236214	-21.0
E05	390226.0	5907976.0	1,352448	53,309586	-21.5	K05	393976.0	5908079.0	1,407470	53,221359	-21.8
E06	389624.0	5908486.0	1,343201	53,313883	-21.1	L01	391174.0	5901522.0	1,368835	53,251789	-21.0
F01	392353.0	5904837.0	1,385377	53,281817	-21.7	L02	391122.0	5900148.0	1,368528	53,239433	-19.9
F02	393254.0	5905526.0	1,398954	53,288180	-23.2	L03	391700.0	5909631.0	1,378257	53,234918	-20.2
F03	392849.0	5906016.0	1,389417	53,292470	-22.8	L04	392399.0	5909114.0	1,389002	53,230402	-21.0
F04	392044.0	5906509.0	1,380177	53,286750	-22.4	L05	393038.0	5908508.0	1,397745	53,225877	-20.6
F05	391439.0	5906999.0	1,370936	53,301030	-22.0	Sub St (DW OSS)	391870.0	5902956.0	1,375776	53,264808	-21.1

Legend Main Map

- ▲ WTG Layout Design Basis
- Exclusion Zone
- Sub Station
- Planned Interarray Cable Route
- Planned Export Cable Route
- Consented Field Outline
- Bathymetry (m rel. to LAT)
 - < -26
 - -24 -26
 - -22 -24
 - -20 -22
 - -18 -20
 - -16 -18
 - -14 -16
 - -12 -14



REV.	DATE	REASON FOR ISSUE	PREPARED	CHECKED	APPROVED
04	01.03.2016	ISSUED FOR INFORMATION	EDGS	HEMANN	JORWID
03	05.03.2015	ISSUED FOR INFORMATION	EDGS	HEMANN	JORWID
02	27.11.2014	ISSUED FOR INFORMATION	EDGS	HEMANN	JORWID

PROJECT NAME: **Dudgeon Offshore Windpark**

DRAWING TITLE: **WTG and Substation Locations**

COORDINATE REFERENCE SYSTEM: Datum: WGS84, Projection: UTM Zone 29N, TRANSFORMATION USED: NONE

COUNTRY/AREA: **UK / North Norfolk**

SCALE: 1:50000

REVISION NO.: A3

DRAWING NO.: C177-DOW-N-XE-0001-01

DATE: 04

NOTES:

This map features bathymetry from seabed survey: ST 13504 DOWF Sub and Seabed Mapping (2013). According to the subcontractor's error budget for this survey the accuracy is as follows:

The (horizontal) accuracy for navigation is +/- 20 cm (Horizontal determined by the dynamic position calibration for primary and secondary navigation system)

The (vertical) accuracy bathymetry: At 20m water depth the Total Vertical Uncertainty is +/- 27cm. At 50m water depth the Total Vertical Uncertainty is +/- 33 cm.

VESSEL CONTACT DETAILS

ESVAGT NJORD



Call sign: OWZN2

Bridge Phone: VSAT.TEL: +45 32 71 26 89; / GSM: +45 32 71 26 85

E-mail: njord@esvagtvesel.com